



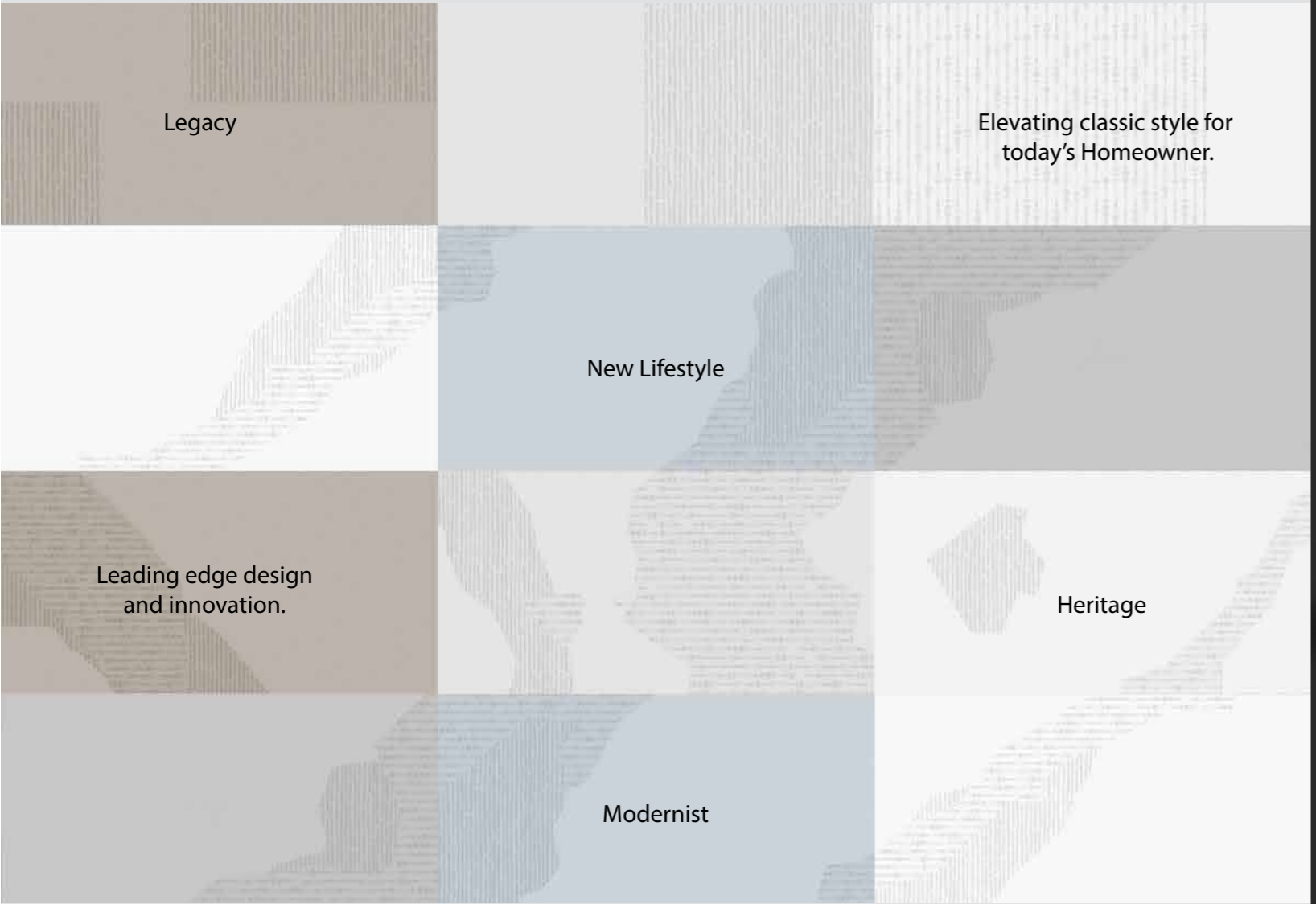
Exceeding The Limits To Always Get The Best

**ROCKER**  
COLLECTION

800x1600 MM



## CONNECTING THE VALUE OF SLAB



Legacy

Elevating classic style for today's Homeowner.

New Lifestyle

Leading edge design and innovation.

Heritage

Modernist

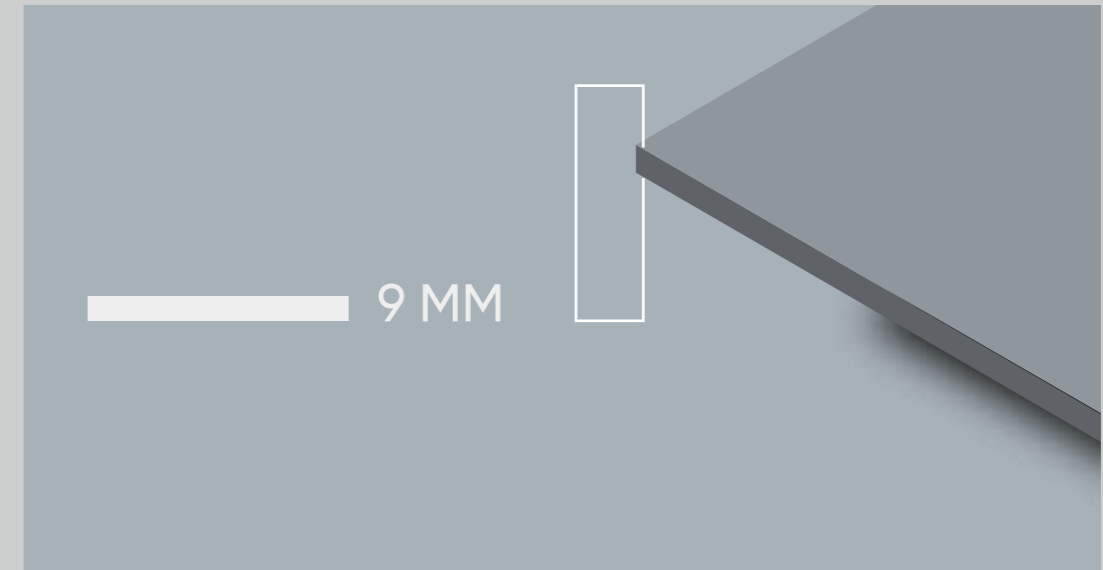
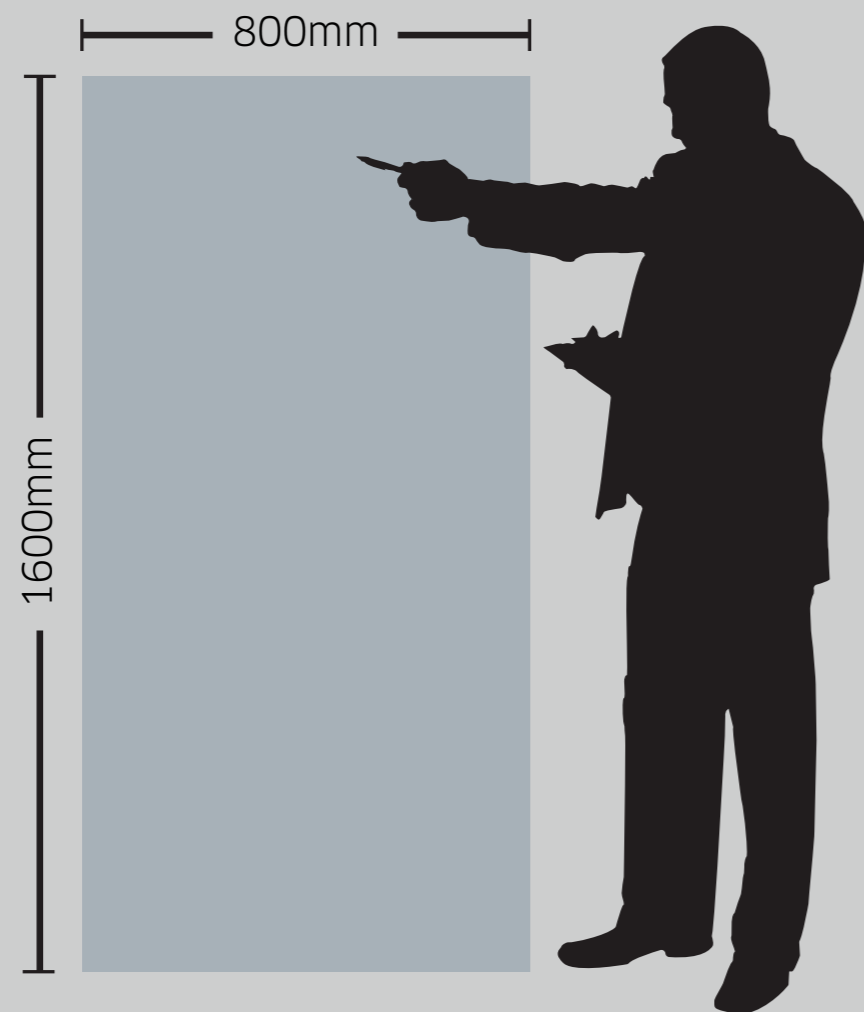


CONTINUA+ is the most efficient, highest-productivity technology for the accurately managed manufacture of ceramic slabs and tiles, also producible with traditional bodies. The slabs are, in fact, formed without using a traditional press or mould, ensuring maximum flexibility in terms of size and thickness.



CONTINUA+ seamlessly integrates the powder forming phase and subsequent digital decoration. The key strengths of this exclusive process are high quality texturing and unrivalled surface shine.

# PRODUCT Formats



The thicknesses are one of the most important elements characterizing.

9 mm is set aside for the most demanding product applications such as wall & floor.

## PRODUCT Range



Elegant Ash



Elegant Bianco



Elegant Grey



Frost Grey



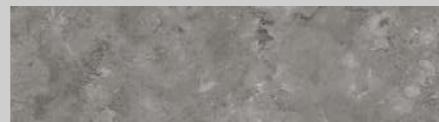
Glacier Classic Grande



Natural Wood Light



Maxima Brown



Royal Steel



Royal White

## PRODUCT Finishes

### ROCKER

The ability of rocker finish porcelain tiles to provide crevices and grains across the surface of the slab, similar to natural marble and woods, as well as higher durability and impressive appearance, are some of the reasons for their widespread craze and acceptance.



## APPLICATION Areas

AIRPORT



STAIRCASE



INDUSTRIES



GYMNASIUMS



HOTELS



CORRIDORS HALLS



SCHOOLS



SUPER MARKET



OFFICE



## TECHNICAL Features

LIGHTWEIGHT



WATERPROOF



RESISTANT TO SCRATCHES



RESISTANT TO HIGH  
TEMPERATURES



EASY TO CLEAN



RESISTANT TO BENDING



100% NATURAL



RECYCLABLE



HYGIENIC



RESISTANT TO UV RAYS







# **ELEGANT ASH**

Random Face 6

**FINISH**  
**ROCKER**

**SIZE**  
**800x1600 MM**

**THICKNESS**  
**9 MM**

**ROCKER**  
COLLECTION





# **ELEGANT BIANCO**

Random Face 6

**FINISH**  
**ROCKER**

**SIZE**  
**800x1600 MM**

**THICKNESS**  
**9 MM**

**ROCKER**  
COLLECTION





# **ELEELEGANT GREY**

Random Face 6

**FINISH**  
**ROCKER**

**SIZE**  
**800x1600 MM**

**THICKNESS**  
**9 MM**

**ROCKER**  
COLLECTION





# **FROST GREY**

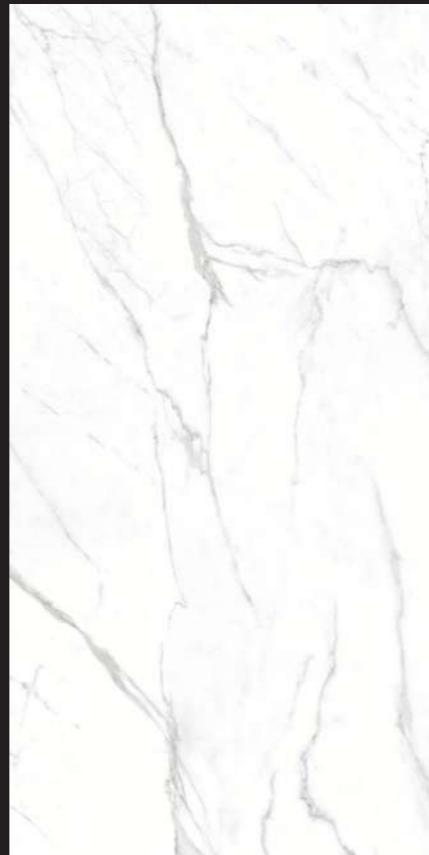
Random Face 3

**FINISH**  
**ROCKER**

**SIZE**  
**800x1600 MM**

**THICKNESS**  
**9 MM**

**ROCKER**  
COLLECTION



# **GLACIER CLASSIC GRANDE**

Random Face 4

**FINISH**  
**ROCKER**

**SIZE**  
**800x1600 MM**

**THICKNESS**  
**9 MM**

**ROCKER**  
COLLECTION





# **MAXIMA ASH**

Random Face 4

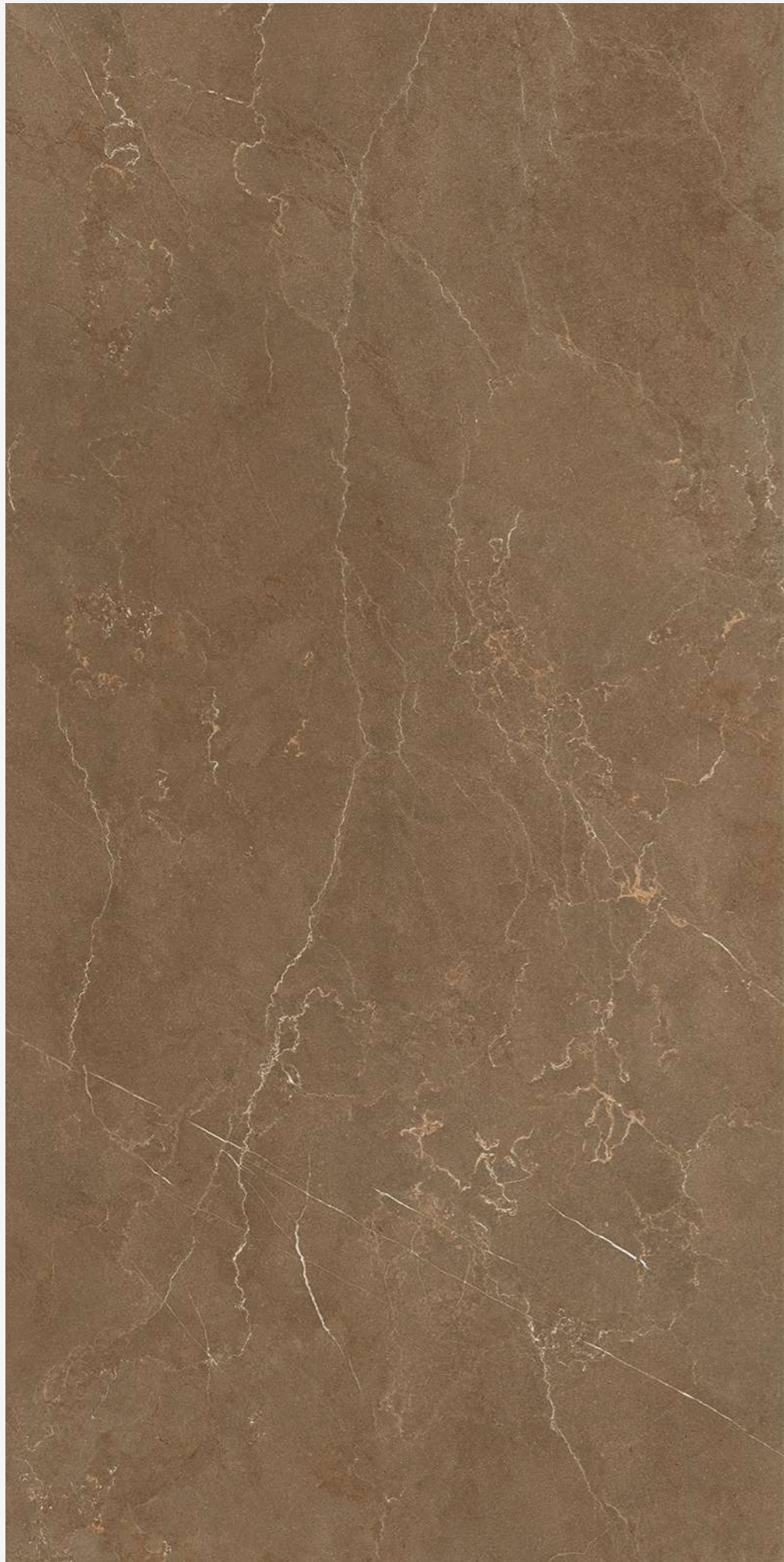
**FINISH**  
**ROCKER**

**SIZE**  
**800x1600 MM**

**THICKNESS**  
**9 MM**

**ROCKER**  
COLLECTION





# **MAXIMA BROWN**

Random Face 4

**FINISH**  
**ROCKER**

**SIZE**  
**800x1600 MM**

**THICKNESS**  
**9 MM**

**ROCKER**  
COLLECTION





# **ROYAL STEEL**

Random Face 3

**FINISH**  
**ROCKER**

**SIZE**  
**800x1600 MM**

**THICKNESS**  
**9 MM**

**ROCKER**  
COLLECTION





# **ROYAL WHITE**

Random Face 3

**FINISH**  
**ROCKER**

**SIZE**  
**800x1600 MM**

**THICKNESS**  
**9 MM**



**ROCKER**  
COLLECTION



## Cleaning & Maintenance

Our products are non porous (due to their high quality raw materials, stringent production parameters and state of the art technology), hence any dust or deposited waste cannot penetrate the surface.

For most cases only a damp cloth is sufficient for cleaning.

Regular cleaning highlights the aesthetic features of the surface and gives it exceptional shine.

For highly aggressive cleaning caused by some common food and substances follow the table below.

TYPE OF STAIN	CHEMICAL PRODUCT	EXAMPLE
Grease	Alkaline - Solvent	Detergent
Oil	Solvent	Ammonia, Backing Soda
Ink	Oxidant - Solvent	Alcohol, Liquid Bleach, Nail Paint Remover
Rust	Acid	Hydrochloric Acid, Vinegar, Red Harpic
Lime	Acid	Descaling Reagent, Hydro Chloric Acid
Cement	Acid	Hydro Chloric Acid
Wine	Alkaline	Ammonia, Liquid Bleach
Coffee	Alkaline - Solvent	Ammonia, Liquid Bleach
Rubber	Solvent	Alcohol, Thinner
Plaster	Acid	Hydro Chloric Acid
Candle Wax	Solvent	Alcohol, Thinner
Iodine	Oxidant	Liquid Bleach
Blood	Oxidant	Liquid Bleach
Ice Cream	Alkaline	Liquid Bleach

Note: It is recommended that any kind of stain needs to get clean immediately / as soon as possible.

## Technical Specification

CHARACTERISTIC	STANDARD AS PER ISO13006:2018/ EN14411 Gr.Bla	MEAN VALUE OF	TEST METHOD
<b>Regulatory Properties</b>			
Deviation in Length and Width	± 0.30 % (±1.00mm)	± 0.10 %	ISO 10545-2
Deviation in Thickness	± 5.00 % (±0.50mm)	± 5.00 %	ISO 10545-2
Straightness in Side	± 0.30 % (±0.80mm)	± 0.10 %	ISO 10545-2
Rectangularity	± 0.30 % (±1.50mm)	± 0.10%	ISO 10545-2
Surface Flatness Central Curvature	± 0.40 % (±1.80mm)	± 0.50 %	ISO 10545-2
Surface Flatness Edge Curvature	± 0.40 % (±1.80mm)	± 0.50 %	ISO 10545-2
Surface Flatness Warpage	± 0.40 % (±1.80mm)	± 0.50 %	ISO 10545-2
Surface Quality	> 95% defects free	> 95% defects free	ISO 10545-2
Small Color Difference(for Plain Colour)	ΔE < 1.00	ΔE < 0.30	ISO 10545-16
Glossiness ( Polished)	as per mfg.	Gloss Value> 90	Gloss Meter 60°
Glossiness (Matt)	as per mfg.	3 <Gloss Value<7	Gloss Meter 60°
Glossiness (Satin/Posh)	as per mfg.	7<Gloss Value<18	Gloss Meter 60°
<b>Structural Properties</b>			
Water absorption	≤ 0.50 %	≤ 0.060 %	ISO 10545-3
Bulk density	as per mfg.	Min. 2.28 g/cc	ISO 10545-3
<b>Massive Mechanical Properties</b>			
Modulus of rupture	Min. 35.0 N/mm <sup>2</sup>	Min. 42.0 N/mm <sup>2</sup>	ISO 10545-4
Breaking strength thickness <7.5	Min. 700.0 N	Min. 1000.0 N	ISO 10545-4
Breaking strength thickness ≥7.5	Min. 1300.0 N	Min. 1800.0 N	ISO 10545-4
Breaking strength thickness ≥7.5mm)	Min. 1300.0 N	Min. 7500.0 N	ISO 10545-4
<b>Surface Mechanical Properties</b>			
MOH'S hardness #	as per mfg.	Glossy Min. 4*/ Posh Min. 6	BS EN 15771
Surface abrasion resistance #	as per mfg.	Glossy Min. 2/ Posh Min. 3	ISO 10545-7
Deep abrasion resistance #	Max. 175m <sup>3</sup> m	Max. 132m <sup>3</sup> m	ISO 10545-6
<b>Thermal Hydrometric Properties</b>			
Moisture expansion	Max. 0.06%(0.6mm/m)	Max. 0.02mm/m	ISO 10545-10
Thermal expansion(COE) at 100°C	as per mfg.	Max. 6.0 x 10 <sup>-6</sup>	ISO 10545-8
Thermal shock resistance	Min. 10 Cycle	Min. 10 Cycle	ISO 10545-9
Impact resistance(COR) #	Min. 0.55	Min. 0.55	ISO 10545-5
Frost resistance	as per mfg.	Frost Proof	ISO 10545-12
<b>Chemical Properties</b>			
Resistance to staining glazed	Min. Class 3	Min. Class 4	ISO 10545-14
Resistance to household chemicals & swimming pool salts glazed	Min. Class GB	Min. Class GA	ISO 10545-13
Resistance to low concentrate acid and alkalis glazed	as per mfg.	Min. Class GLB**	ISO 10545-13
Resistance to high concentrate acid and alkalis glazed	as per mfg.	Min. Class GHB**	ISO 10545-13
<b>Safety Properties</b>			
Skid resistance(DCOF-DRY) ##	as per mfg.	Glossy P0(< <sup>12</sup> ) / Posh ≥P1( <sup>12</sup> - <sup>24</sup> )	BS 7976-2
Slip resistance(DCOF)( R value) ##	as per mfg.	R9 to R <sup>13</sup>	DIN 51130
Fire resistance	as per mfg.	Fire Proof	N.A.

\* With Nano polished

\*\* Except Hydrofluoric Acid & it's compound

# Tiles Intended for use on floor

## As per customer requirement

## Packing Details

PRODUCT	SIZE	THICKNESS	TILES / BOX	COVERAGE AREA / BOX	WEIGHT (Kg)
Rocker	800x1600mm	9mm	2pc	27.55 Sq ft	53 Kgs